

The Children's Journal

News from Campus Child Care for parents, advocates and all who work to provide quality early care and education for children and their families.

In This Issue

Message from Lynn 1

Odyssey Recognizes OCCFR.... 1

Better than a Birthday..... 2

Celebrating "Dan the Man".... 2

Beyond the Classroom..... 3

Development Update 3

Special Thanks 4

Message from Lynn



A recent article on [cnn.com](http://www.cnn.com/2011/LIVING/07/19/student.parents/index.html?iref=allsearch) focusing on single student parents included information about child care provided on campuses nationwide. UW-Madison (and our office) was recognized for child care programs and the additional support services that benefit student parents (<http://www.cnn.com/2011/LIVING/07/19/student.parents/index.html?iref=allsearch>). The article cited a 2011 report from the Institute for Women's Policy Research reporting 3.9 million student parents are working on their undergraduate degrees in the United States. Nearly half of those students are single parents and work full-time jobs. **The conclusion:** Campus-based child care programs are essential. We agree.

Last year, student parents wrote support letters to student government leaders to thank them

for their support through segregated fees. All compelling, I chose this to share with you: *"My 11-month-old daughter means the world to me ... and my goal in life is to provide the best life possible, meaning to finish my degree ... Thankfully, she is able to spend the day with loving teachers, learning every day ... I am beyond grateful for your support and services."* We receive hundreds of testimonials like this story and are proud to be in the position of supporting so many families from so many different places around the world.

CNN rightfully gave our student government credit for funding our programs and our thanks also extend to the UW administration for its ongoing commitment. Finally, thanks to super staff Jen Dittrich and Daron Nealis, who listen and problem-solve for hundreds of families each semester. They do an absolutely great job in being responsive.

Lynn Edlefson, Director

Our mission and vision:

We envision creating model programs and services, based on research and best practice, that are affordable, available and of the very highest quality.

Odyssey Recognizes Campus Child Care

Each week during the academic year, the OCCFR provides child care for the 30 adult returning students enrolled in the Odyssey Project directed by Professor Emily Auerbach. Since 2004, we've worked with community partner Head Start to provide on-site care in South Madison. Last May, our office was honored at the Odyssey Graduation for the "generous and ongoing support of a free college humanities course for adults facing economic barriers to higher education." We appreciate the recognition, but pass on the kudos (again) to our fabulous student government leaders who support this important outreach project. Thank you, student government!



Student Tim Johnson (left) reads aloud his written assignment during the UW-Madison Odyssey Project at the Harambee Center in south Madison.



Visit us on Facebook:
www.facebook.com/UWMadisonOCCFR



We appreciate your generous support!*

New Campus Child Care Initiatives

- Lynn Edlefson
- Douglas N. Rose
- Gary & Kathy Sandefur
- Daniel & Charlene Tortorice
- Connie L. Wilson

Connie L. Wilson Child Care Center Fund

- Barbara Lafferty
- Lucy J. Mathiak
- E. Alison Rice
- Kendall & Mary Rouse
- Connie L. Wilson

Student Child Care Scholarship Grants

- Patricia Flatley Brennan and Connor, in honor of Bob.
- Robert & Patricia Fessenden
- Wendy L. Hughes

Classified Staff Child Care Grants

- Gary D. Mitchell

In Kind Contributors:

- Donna Leet
- Bunny Herbst
- Patricia Anderson
- Pat Laubach
- Sue Thomas and her sisters
- Gertrude Wilson, Sally and Barbara

*Donations received February–August 2011



Better Than A Birthday...by Debb Schaub, Director, Eagle's Wing



Look what came up in our garden from that one little seed! (with teacher Derya Gok)

Maybe you recall waking up on your birthday knowing that it was your special day? Well, thanks to our very own Connie L. Wilson, the campus children's center's teachers and directors have a chance for that feeling all over again through the Educational Grant Fund set up in Connie's name.

Within the last six months, three grants were funded, all written by campus teachers who had never written a grant before! At Eagle's Wing, energetic student hourly assistant teacher, Nou Thao, requested materials to support her Peace Garden, which gives the children a chance to plant, cultivate and care for the garden and to translate these skills to interac-

tion with one another. Learning and pride abound! The kids even like to weed ... and the little garden community built together is now being harvested. [see picture]

Omary Espinell and Michele McDonough, teachers in another classroom, wrote for outdoor water play and sensory table materials all geared toward providing new activities to help calm an active child (or group!) and help the child in focusing attention, all while having fun. Kirsten Pape's proposal focused on active play and keeping children moving with fun new social games and fitness equipment. And, in addition to the benefits to the children, a funded grant proposal is a feather in the cap of our creative teachers!

On behalf of all of us at the Eagle's Wing, I thank each and every one of you who have supported our center through contributions to Connie's fund. Given the constraints of our budgets, we are so very grateful.

And as Connie would be quick to point out, if you haven't yet had a chance to contribute to the fund, and are interested, please contact Connie at clwilson@wisc.edu.

"Dan the Man" Celebration

"Dan, look at my bear." "Dan, what are you building?" "Dan, can I help you?" Just a few of the—literally—hundreds of questions Dan Watts (named "Dan the Man" by the children) was asked by the Preschool Lab children as he worked for nine months creating a fabulous natural playground at our newest child care facility (Building #39 at University Housing). On August 16, the kids and staff hosted "Dan the Man" to honor his work on their playground, complete with drawings and music. Thanks again to VC Damon Williams and the Evjue Board for their support of this project.



Beyond the Classroom by Jen Dittrich

Every parent wants his or her child to be “successful.” But what does that mean? To be smart, have a good job, and start a family...Successful people were all kids once so what did they do as children that might have contributed to their successful behavior as adults? The answer is that they developed good life skills, and we found a method to help parents struggling to teach this concept to their children.

“Positive Discipline” techniques encourage young people to become responsible, respectful, and resourceful members of their communities. In April, we hosted two nationally-known teachers who worked with 50 of our UW families to teach the skills needed to be successful. The parents

were active learners, practicing and role-playing methods to teach children respect, concern for others, problem-solving, and cooperation. The program teaches children to connect and invites them to discover their capabilities by encouraging the constructive use of personal power and autonomy.

Most participating parents cited bullying and concerns about their child’s social emotional development as the reason they attended. As one parent commented, “It reminded me of the bigger goals of parenting (that I can create a kind, happy independent person), which are easy to forget when we are struggling to get out of the house in the morning.”



Moving

Once the Human Ecology Building is completed on Linden Drive, #39 University Houses will be the new home of Bernie’s Place and University Houses Preschool. This change is being planned for the 2012 Fall Semester.

Development Update by Connie Wilson

Our 14th Annual June Jazzin’ fundraiser to support campus child care was another success thanks to you! We appreciate the support from the Chancellor’s Office, American Family Insurance, StudentPrint, numerous community businesses, and the many campus departments that resulted in a 7% increase in profits over 2010. We are especially appreciative of all the individuals who provided scholarships for our campus teachers to attend the event.

The \$11,533 raised will specifically support two accounts: the Connie L. Wilson Child Care Center Fund and the New Initiatives Fund.

To learn more about how to support campus child care, please email me at clwilson@wisc.edu.

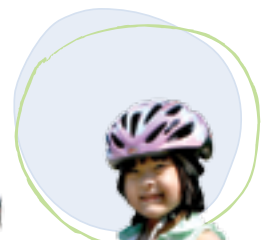
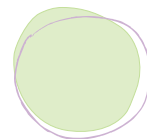
To make a tax-deductible donation, visit our website <http://occf.wisc.edu/giving.htm>. 100% of all gifts provide direct support to campus child care.

- To receive this newsletter by email or to remove your name from our mailing list, contact clwilson@wisc.edu.
- To update your contact information, please visit www.uwfoundation.wisc.edu/survey and log on with the ID number above your name on the newsletter mailing. This information is shared selectively with other campus units and the Alumni Association to ensure that alumni and friends’ information is consistent and accurate.
- To follow us on FACEBOOK: <http://www.facebook.com/UWMadisonOCCFR>

We appreciate your generous support.



Lynn Edlefson stands with honorees from the 14th Annual Jazzin’ event on Thursday, June 2: (L to R) Lynn; Paula Zipper and Debb Schaub, Eagle’s Wing; Patti Moeser, Preschool Lab; Mary Locast, Kerri Lynch, Carol Woltmann and Joan Ershler, Waisman Early Childhood Program. Waisman’s beloved Becky Lewis was also recognized with a Lifetime Achievement Award in Memoriam.



Special Thanks

A very special thanks to individuals, businesses and UW offices for providing monetary support for teacher tickets and underwriting the costs of this year's Jazzin' event.

Individuals

Auerbach, Emily
Bazzell, Darrell
Bromley, Joyce
Casey, Martha
Edlefson, Lynn
Holtzhaus, Linda & Walter
Pollak, Seth
Richner, Bill
Stoddard Cameron, Lindsay
Tortorice, Char
Wiley, John

Businesses

American Family Mutual Insurance Company
University Book Store
UW Health

UW Offices

College of Agricultural & Life Sciences
College of Engineering
College of Letters & Science
Continuing Studies
Office of Vice Provost for Diversity & Climate
School of Education
School of Human Ecology
School of Nursing
School of Pharmacy
StudentPrint

